

# YE10 - Usage Statistics Report

*Prepared by: Dwayne Collins & Alissa Paxton  
31 August 2010*

---

*Including:*

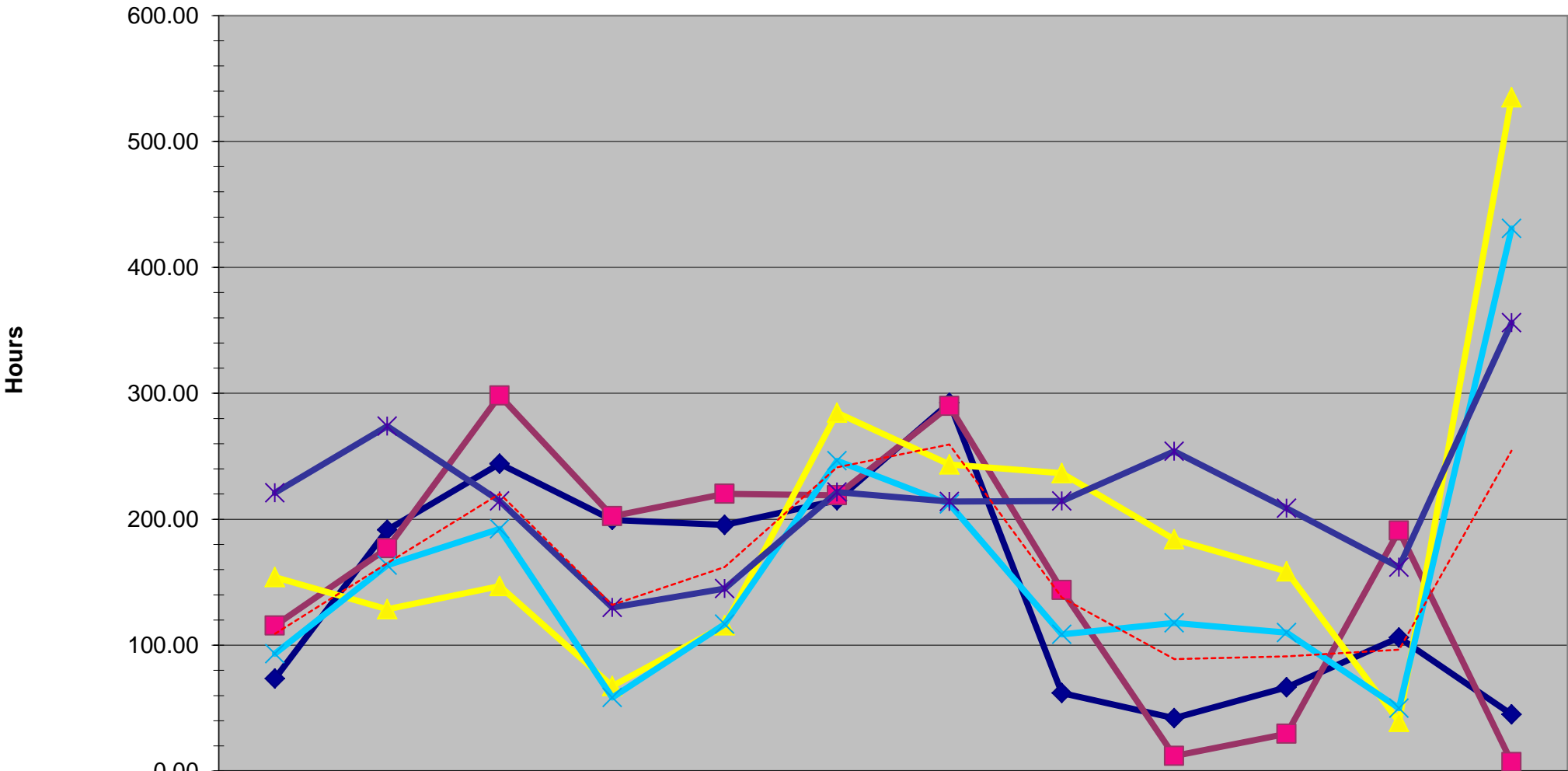
- Comparative Monthly Usage, by Year (YE06<sup>1</sup> – YE10)
- Comparative Room Usage, by Year (YE06<sup>1</sup> – YE10)
- Comparative Organisational Usage, by Year (YE08 – YE10)
- Comparative Capacity<sup>2</sup> Usage, by Room (YE08 – YE10)
- Comparative Tenant Usage, by Year (YE08 – YE10)
- Comparative Daily Usage, by Year (YE08 – YE10)
- Comparative Hourly Usage, by Year (YE08 – YE10)
- Total Hours & Revenue (*@30 August 2010*), by Year (YE06<sup>1</sup> – YE10)

---

Notes:

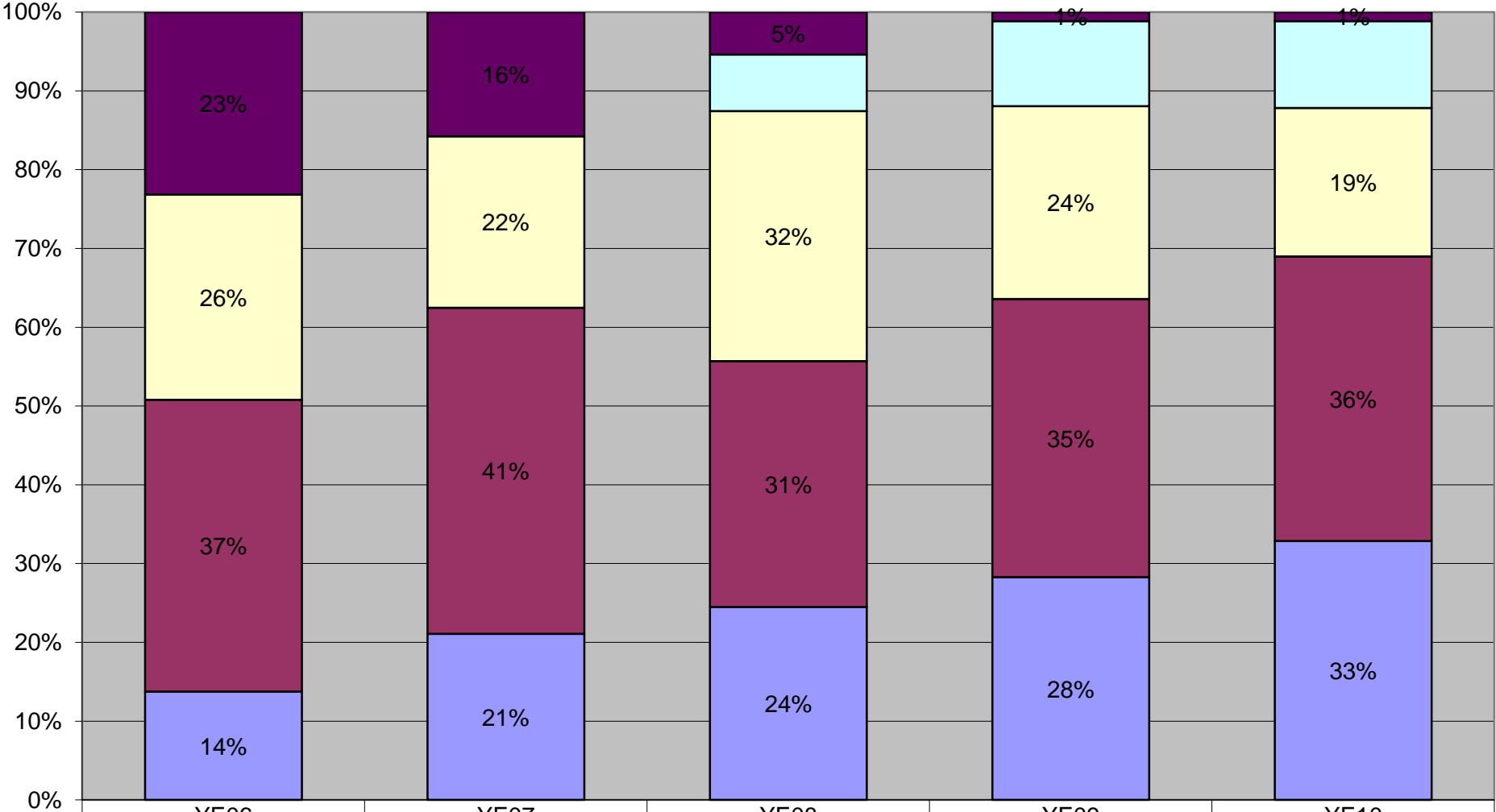
1. Sadleir House did not actively track usage statistics until YE08; we have attempted to reconstruct as much as possible the data from prior periods however there can be no guarantees of accuracy. Data from the period of YE06-YE07 should be taken as estimates only and is subject to change as we are still attempting to reconstruct information (particularly in areas that do not have any information prior to YE08).
2. Capacity is calculated by using the total number of hours each room is open to the public. Generally speaking these correspond to the operating hours of the House but may differ for each room based on construction, etc. As such, only hours used during regular hours count towards capacity calculations; hours outside of regular House hours are not included.

# Comparative Monthly Usage, by Year



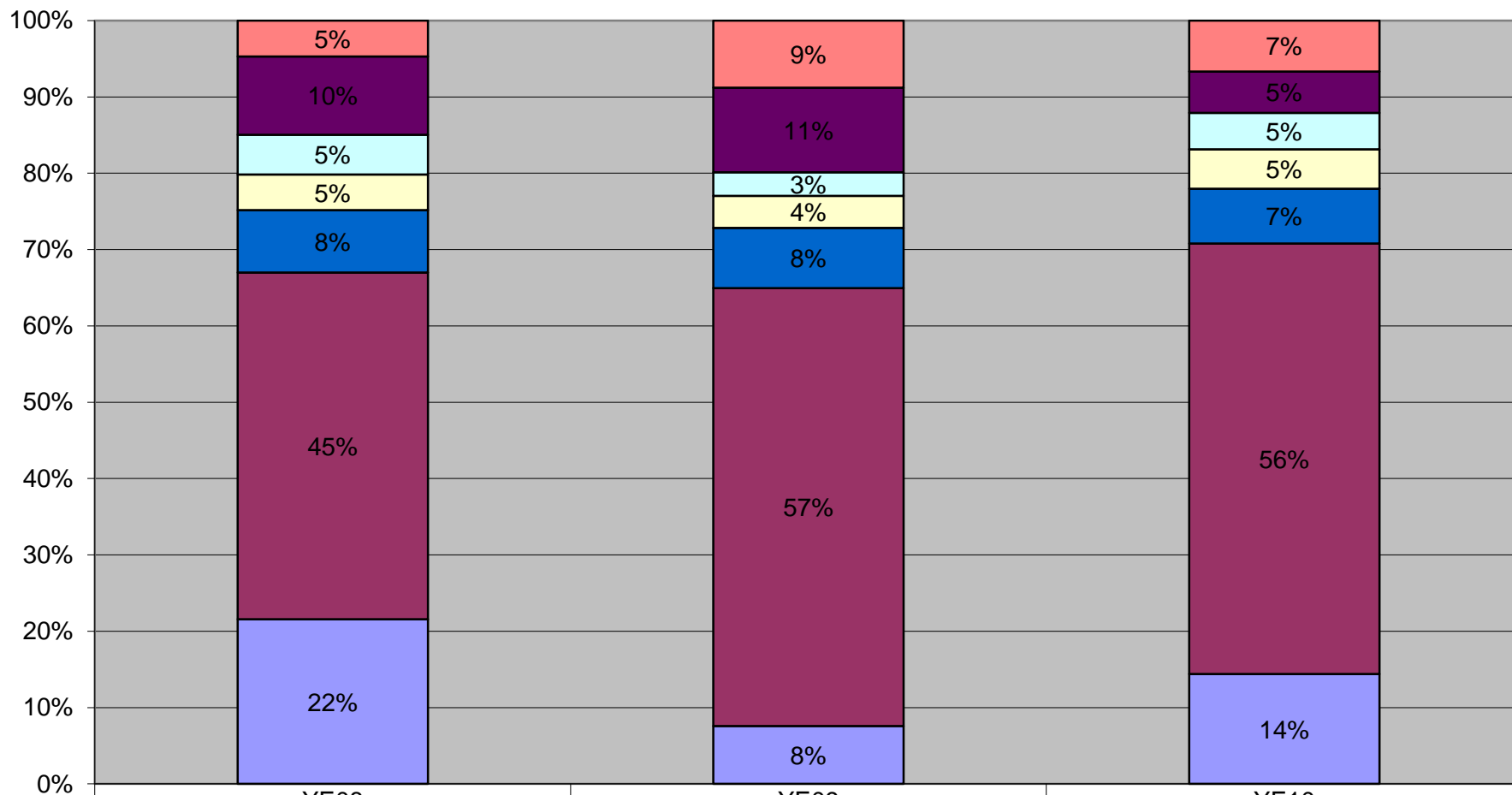
	September	October Q1	November	December	January Q2	February	March	April Q3	May	June	July Q4	August
◆ YE06	73.50	191.50	244.00	199.50	195.50	215.00	292.50	62.00	42.00	66.50	106.00	45.00
■ YE07	115.50	177.00	298.25	202.50	220.25	219.00	290.00	143.75	12.00	29.50	191.00	7.00
▲ YE08	154.00	128.50	147.00	67.50	115.75	284.50	243.50	236.50	184.00	158.50	39.00	535.00
✕ YE09	93.25	163.50	192.25	58.50	116.75	246.50	212.00	108.50	117.75	110.00	50.00	431.00
✱ YE10	221.00	274.00	214.50	130.00	145.00	221.50	214.00	214.50	254.00	208.75	162.00	356.00
- - - Average (YE06-YE09)	109.06	165.13	220.38	132.00	162.06	241.25	259.50	137.69	88.94	91.13	96.50	254.50

# Comparative Room Usage, by Year



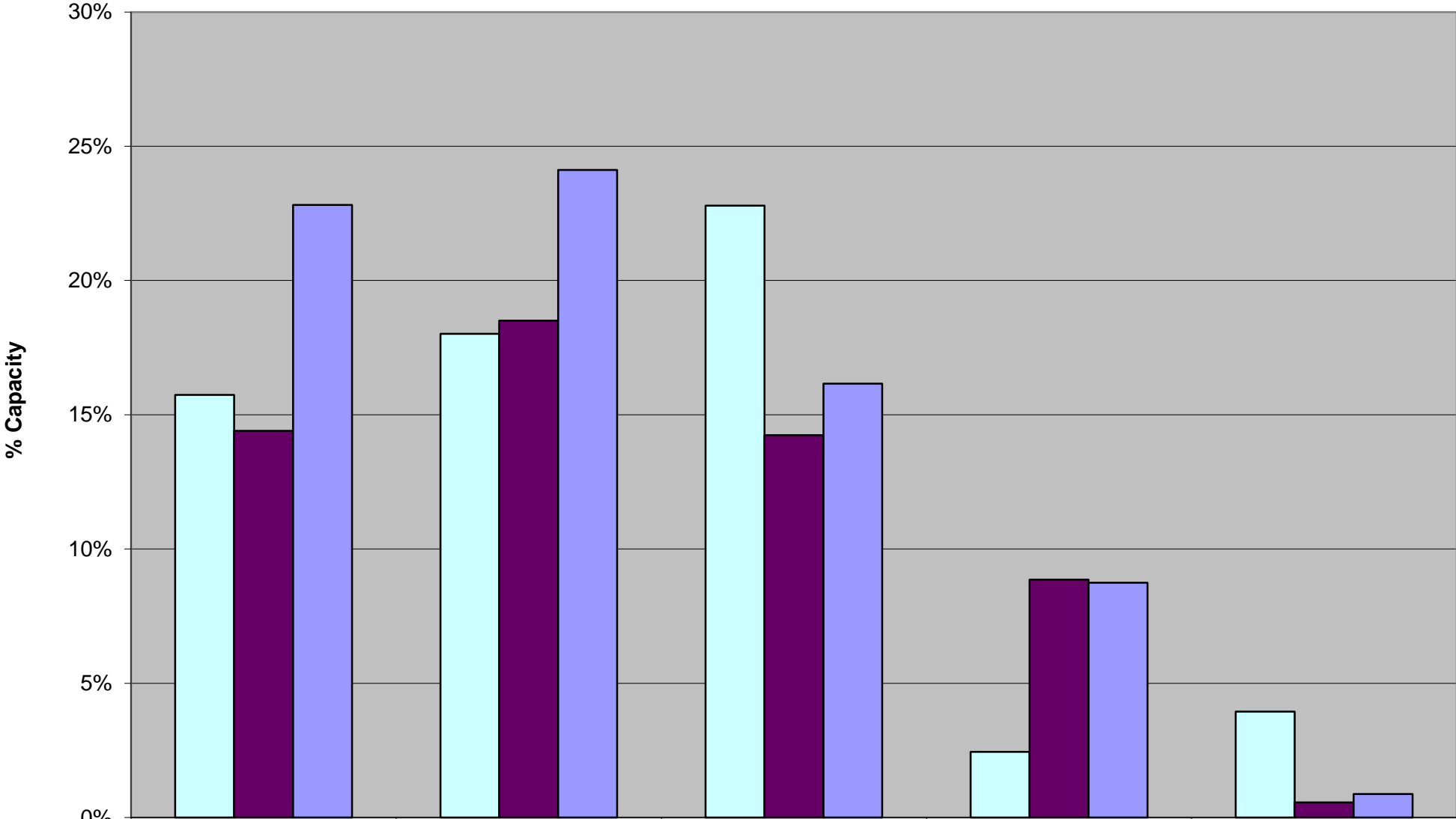
	YE06	YE07	YE08	YE09	YE10
Other	23%	16%	5%	1%	1%
SCR	0%	0%	7%	11%	11%
Lecture Hall	26%	22%	32%	24%	19%
Dining Hall	37%	41%	31%	35%	36%
Hobbs	14%	21%	24%	28%	33%

### Comparative Organisational Usage, by Year



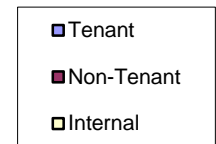
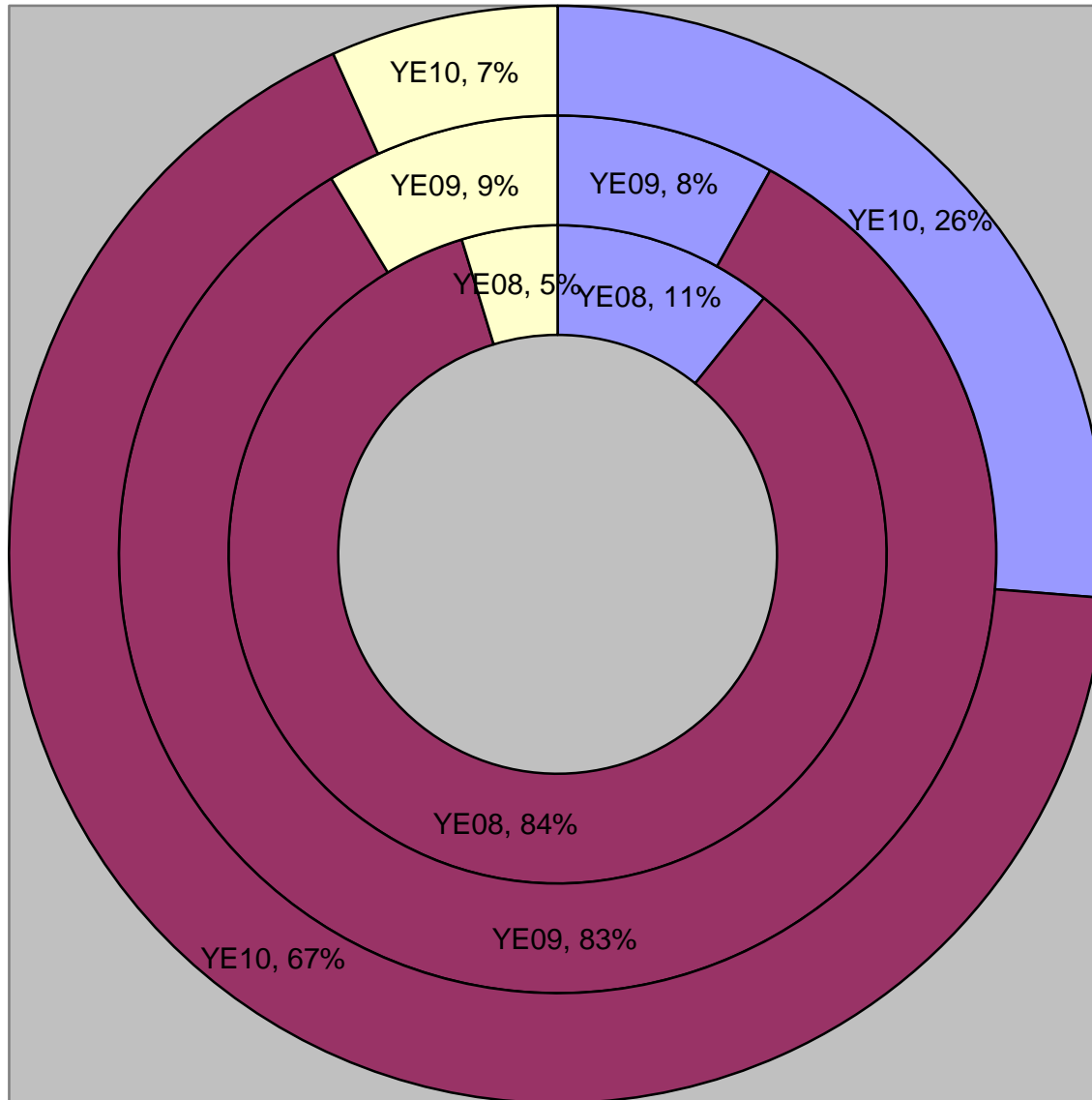
	YE08	YE09	YE10
Programmes	5%	9%	7%
Non-levy Hrs	10%	11%	5%
Small Levy Hrs	5%	3%	5%
Large Levy Hrs	5%	4%	5%
Trent Non-Student	8%	8%	7%
Non-Profit Hrs	45%	57%	56%
Private Hrs	22%	8%	14%

# Comparative Capacity Usage, by Room

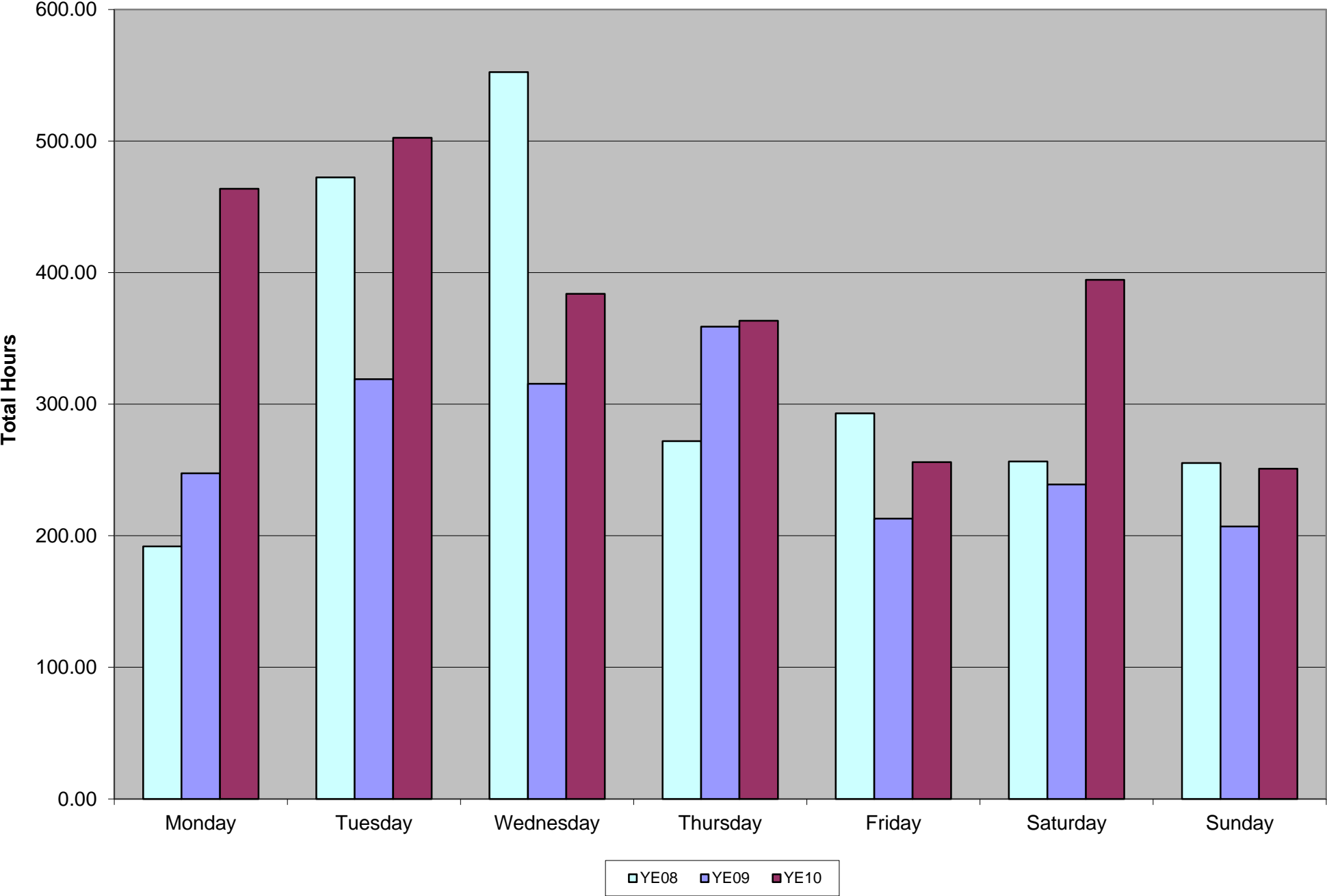


	Hobbs	Dining Hall	Lecture Hall	SCR	Other
YE08	16%	18%	23%	2%	4%
YE09	14%	19%	14%	9%	1%
YE10	23%	24%	16%	9%	1%

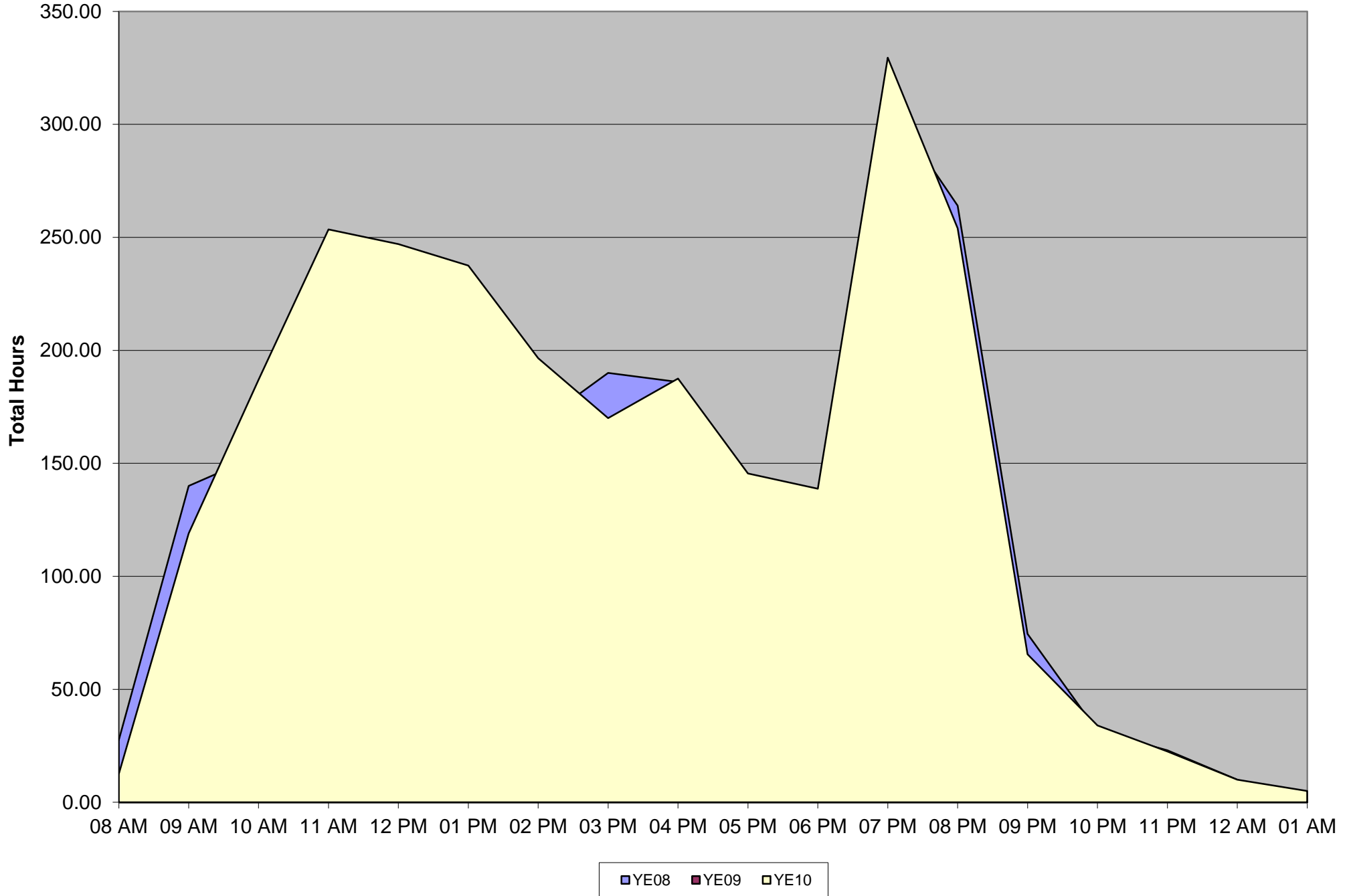
# Comparative Tenant Usage, by Year



Comparative Daily Usage, by Year



# Comparative Hourly Usage



### Total Hours and Revenues

