

Usage Statistics Report

Prepared by: Dwayne Collins & Alissa Paxton

30 June 2009

Including:

Comparative Monthly Usage, by Year (YE06¹ – YE09 [June])

Comparative Room Usage, by Year (YE06¹ – YE09 [June])

Comparative Organisational Usage, by Year (YE08 – YE09 [June])³

Comparative Capacity² Usage, by Room (YE08 – YE09 [June])

Comparative Tenant Usage, by Year (YE08 – YE09 [June])

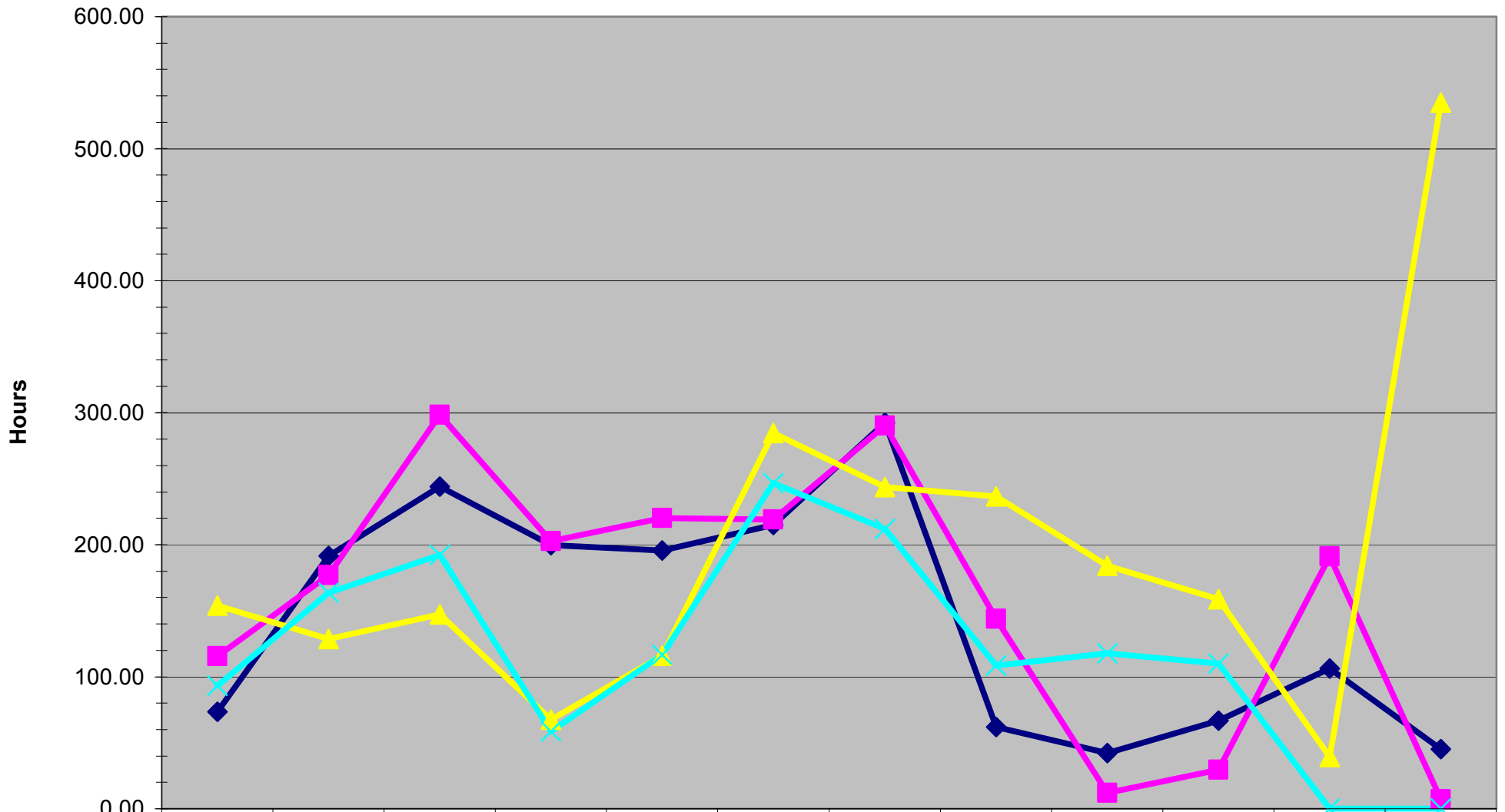
Comparative Daily Usage, by Year (YE08 – YE09 [June])

Comparative Hourly Usage, by Year (YE08 – YE09 [June])

Notes:

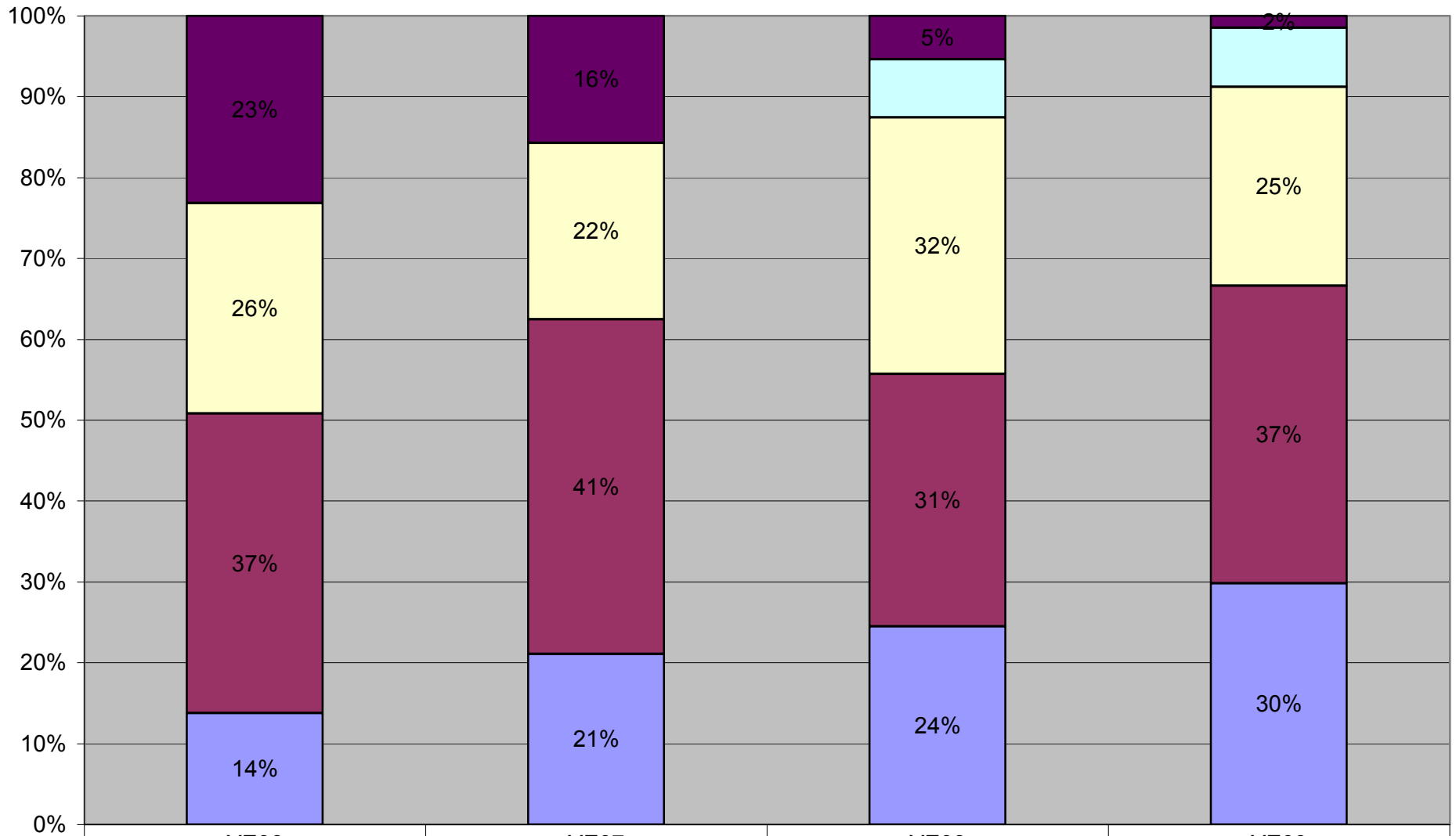
1. Sadleir House did not actively track usage statistics until YE08; we have attempted to reconstruct as much as possible the data from prior periods however there can be no guarantees of accuracy. Data from the period of YE06-YE07 should be taken as estimates only and is subject to change as we are still attempting to reconstruct information (particularly in areas that do not have any information prior to YE08).
2. Capacity is calculated by using the total number of hours each room is open to the public. Generally speaking these correspond to the operating hours of the House but may differ for each room based on construction, etc. As such, only hours used during regular hours count towards capacity calculations; hours outside of regular House hours are not included.
3. New to this iteration of the Usage Statistics Report is a category that tracks usage by Trent University as an institution. This category represents non-student usage and now means that “Non-Profit” & “Private” represent non-University related usage.

Comparative Monthly Usage, by Year



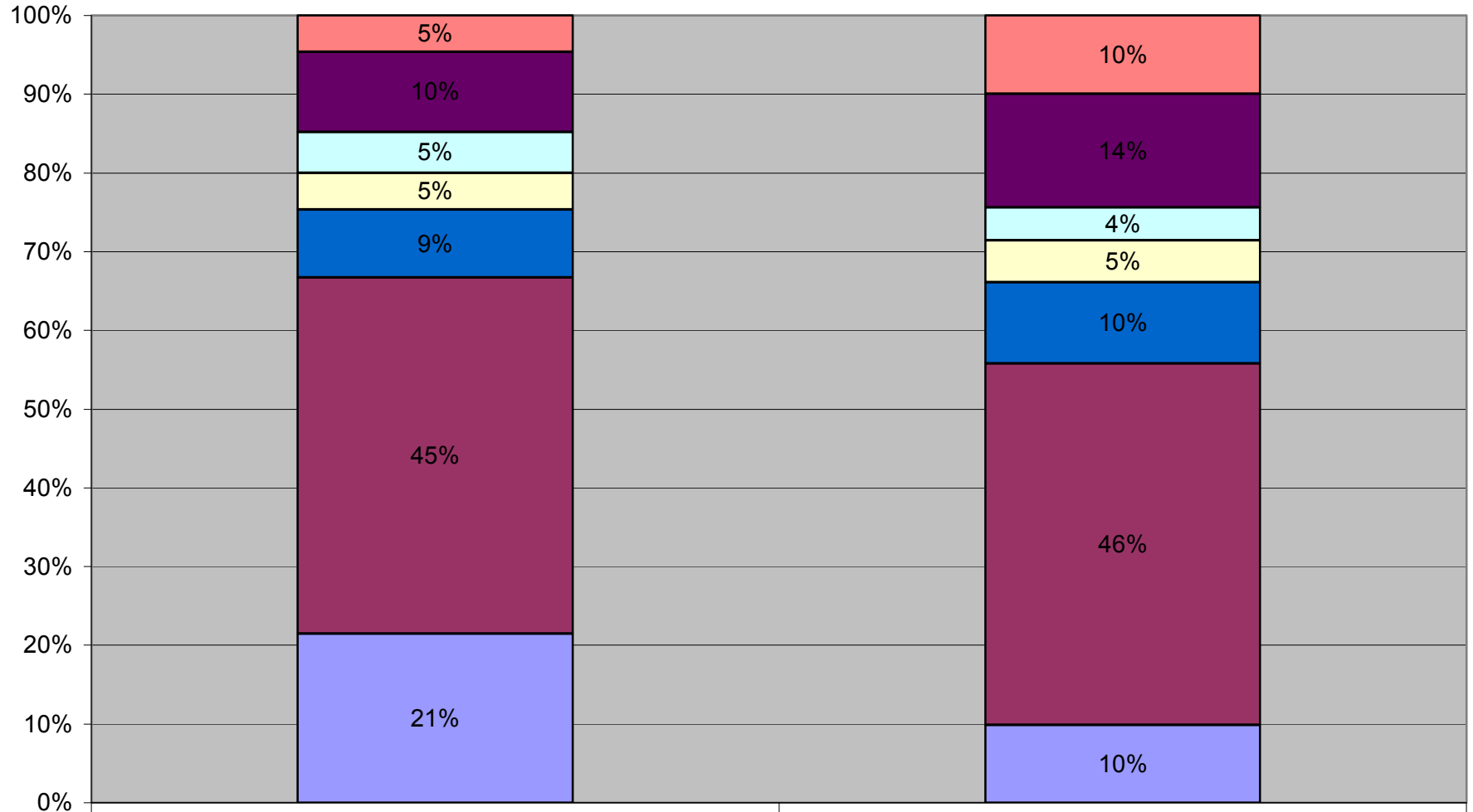
	September	October	November	December	January	February	March	April	May	June	July	August
◆ YE06	73.50	191.50	244.00	199.50	195.50	215.00	292.50	62.00	42.00	66.50	106.00	45.00
■ YE07	115.50	177.00	298.25	202.50	220.25	219.00	290.00	143.75	12.00	29.50	191.00	7.00
▲ YE08	154.00	128.50	147.00	67.50	115.75	284.50	243.50	236.50	184.00	158.50	39.00	535.00
✕ YE09	93.25	163.50	192.25	58.50	116.75	246.50	212.00	108.50	117.75	110.00	0.00	0.00

Comparative Room Usage, by Year



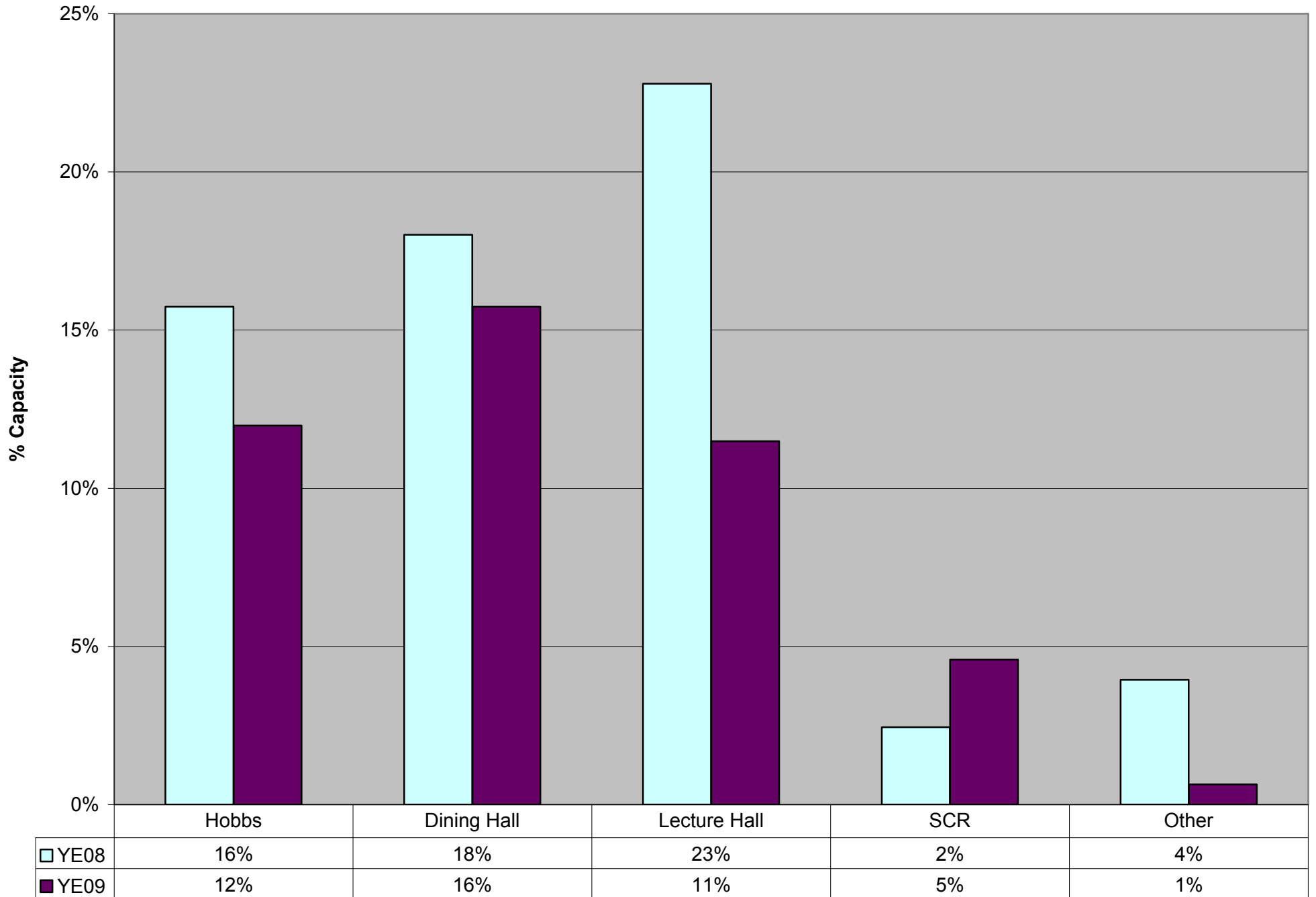
	YE06	YE07	YE08	YE09
Other	23%	16%	5%	2%
SCR	0%	0%	7%	7%
Lecture Hall	26%	22%	32%	25%
Dining Hall	37%	41%	31%	37%
Hobbs	14%	21%	24%	30%

Comparative Organisational Usage, by Year

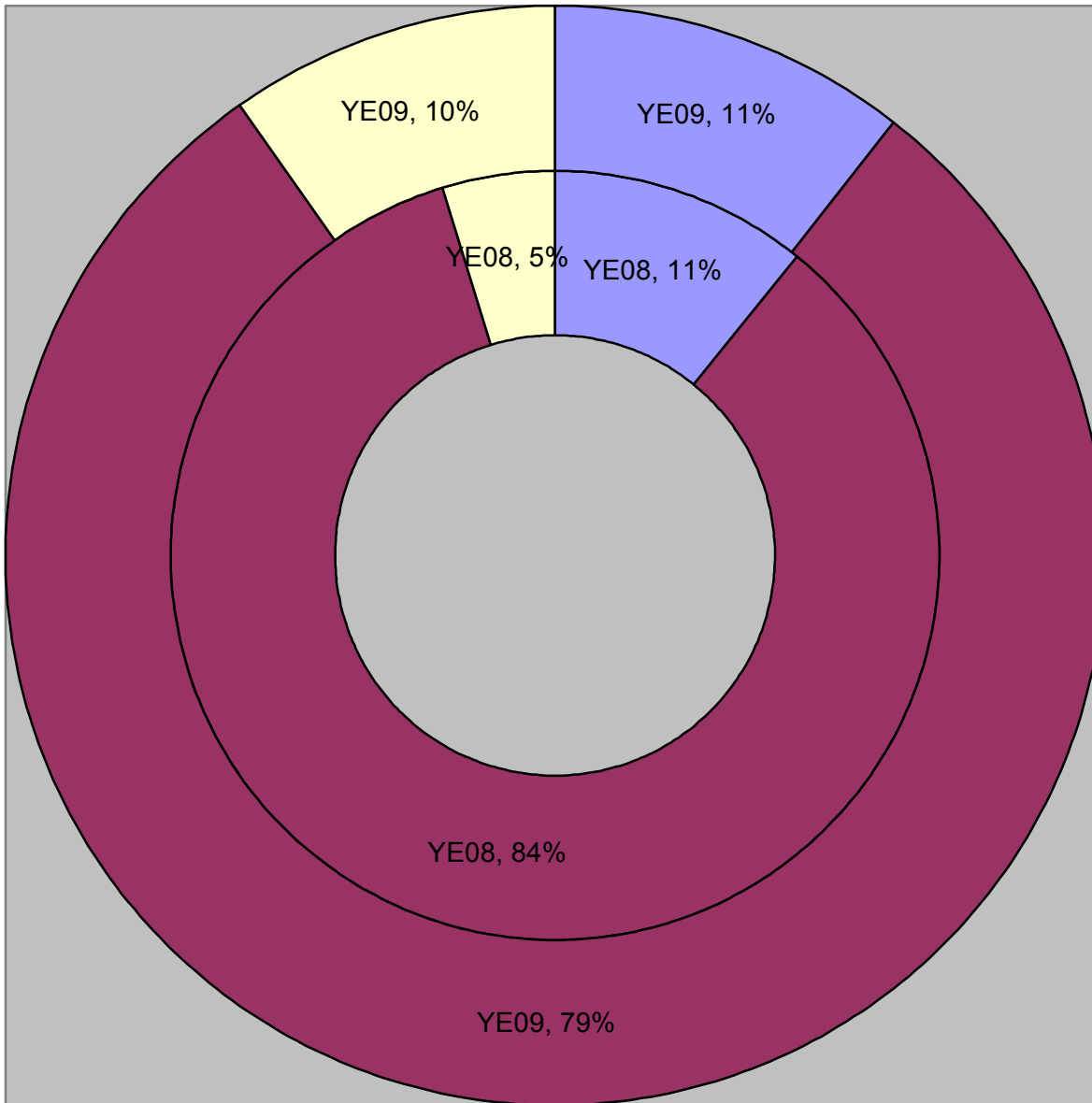


	YE08	YE09
■ Programmes	5%	10%
■ Non-levy Hrs	10%	14%
■ Small Levy Hrs	5%	4%
■ Large Levy Hrs	5%	5%
■ Trent Non-Student	9%	10%
■ Non-Profit Hrs	45%	46%
■ Private Hrs	21%	10%

Comparative Capacity Usage, by Room

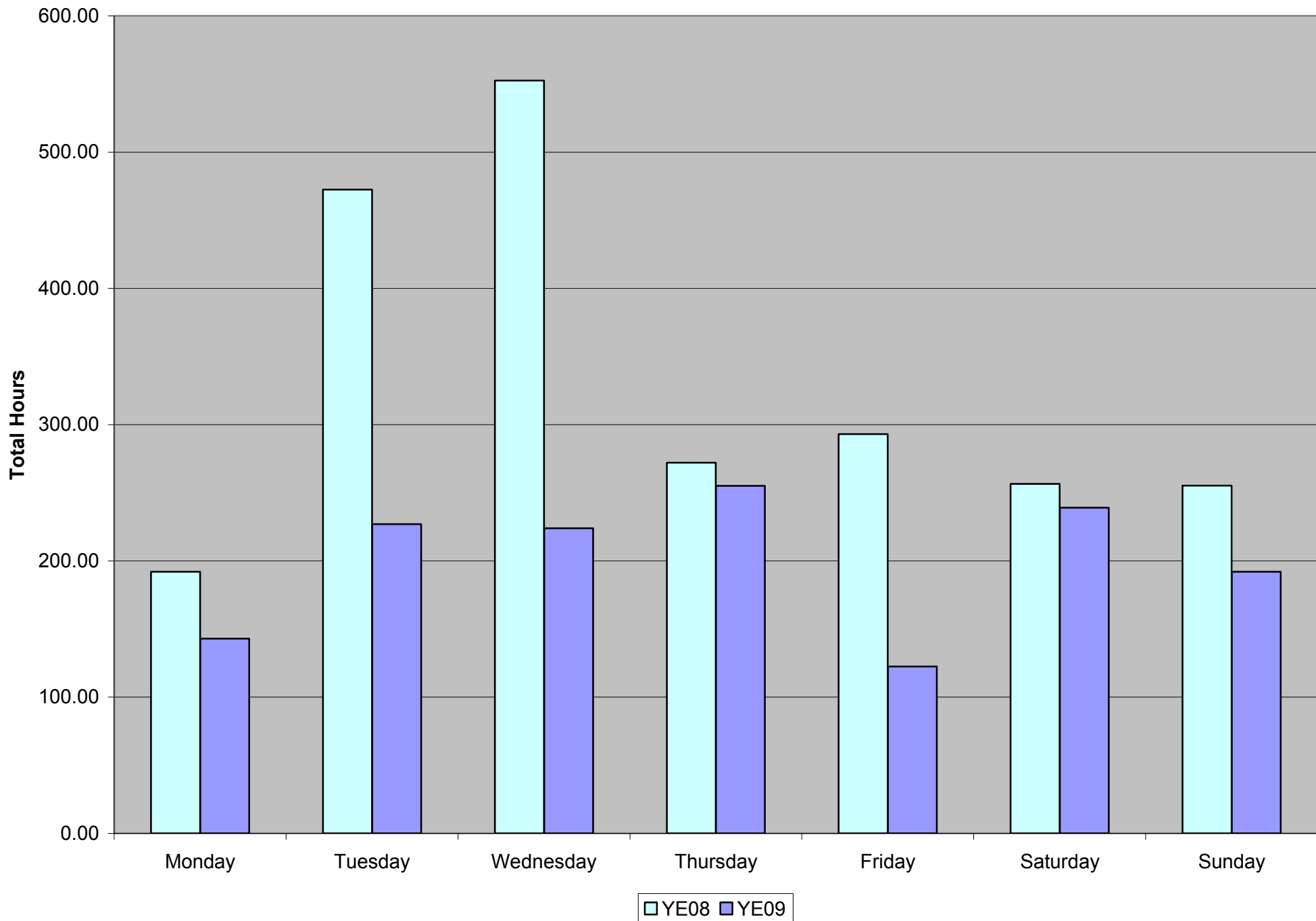


Comparative Tenant Usage, by Year



- Tenant
- Non-Tenant
- Internal

Comparative Daily Usage, by Year



Comparative Hourly Usage

